

PARTS CATALOGUE FOR HOMELOCK

MODEL 1034D

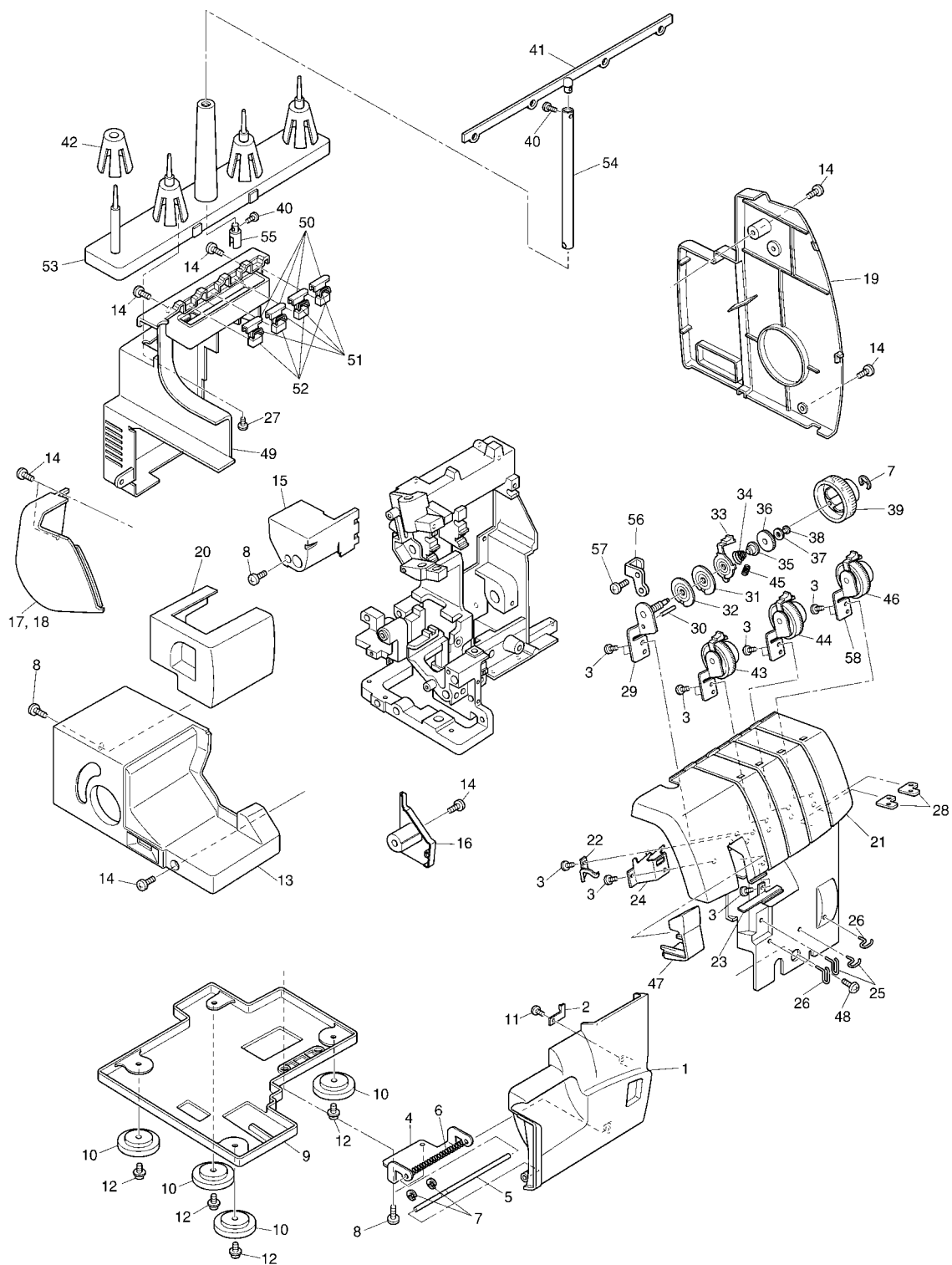
CONTENTS

(1) PRINCIPAL PARTS.....	2
(2) NEEDLE BAR, FEED BAR AND PRESSER HOLDER.....	4
(3) KNIFE AND LOOPER	8
(4) LAMP, MOTOR AND ACCESSORY	10

(1) PRINCIPAL PARTS

No.	PARTS No.	PARTS NAME
1	XB0862001	Front cover
	XB0979001	Front cover A (U.S.A.,CANADA) ADD
2	X75632001	Front cover hook
3	037300815	Set screw
4	XB0293001	Front cover hinge plate
5	X77704001	Front cover guide shaft
6	127174001	Front cover spring
7	048030342	Stop ring
8	060401206	Set screw
9	XB0863001	Oil pan
10	XB0864000	Cushion CHG
11	037300616	Set screw
12	X75720001	Set screw
13	XB0928001	Cloth plate cover
	XB0928002	Cloth plate cover (U.S.A.,CANADA)ADD
14	060400606	Set screw
15	XB0296002	Arm cover
16	XB0297002	Cloth plate side cover
17	XB0865001	Lamp cover
18	XB0865002	Lamp cover (U.S.A. ,CANADA) ADD
19	XB0866001	Belt cover
20	XB0390002	Sub table assembly
21	XB0888001	Panel assembly
22	X77155001	Needle thread guide A
23	XB0890001	Needle thread guide C
24	X77157001	Needle thread take-up guide
25	127943001	Thread guide
26	XB0533001	Thread guide L
27	037301055	Set screw
28	X77762000	Thread guide
29	XB0893001	Thread tension base assembly
30	047251042	Spring pin
31	X77235000	Thread tension disc
32	X77236000	Thread tension disc A
33	XB0934001	Thread tension releaser
34	X77414001	Thread tension spring
35	X75992001	Thread tension spring washer upper
36	X76878000	Thread tension nut
37	025040232	Washer
38	X76879000	Wave washer
39	XB0898001	Thread tension dial (yellow)
40	037200615	Set screw
41	X77735002	Thread guide 4
42	126863003	Spool cushion

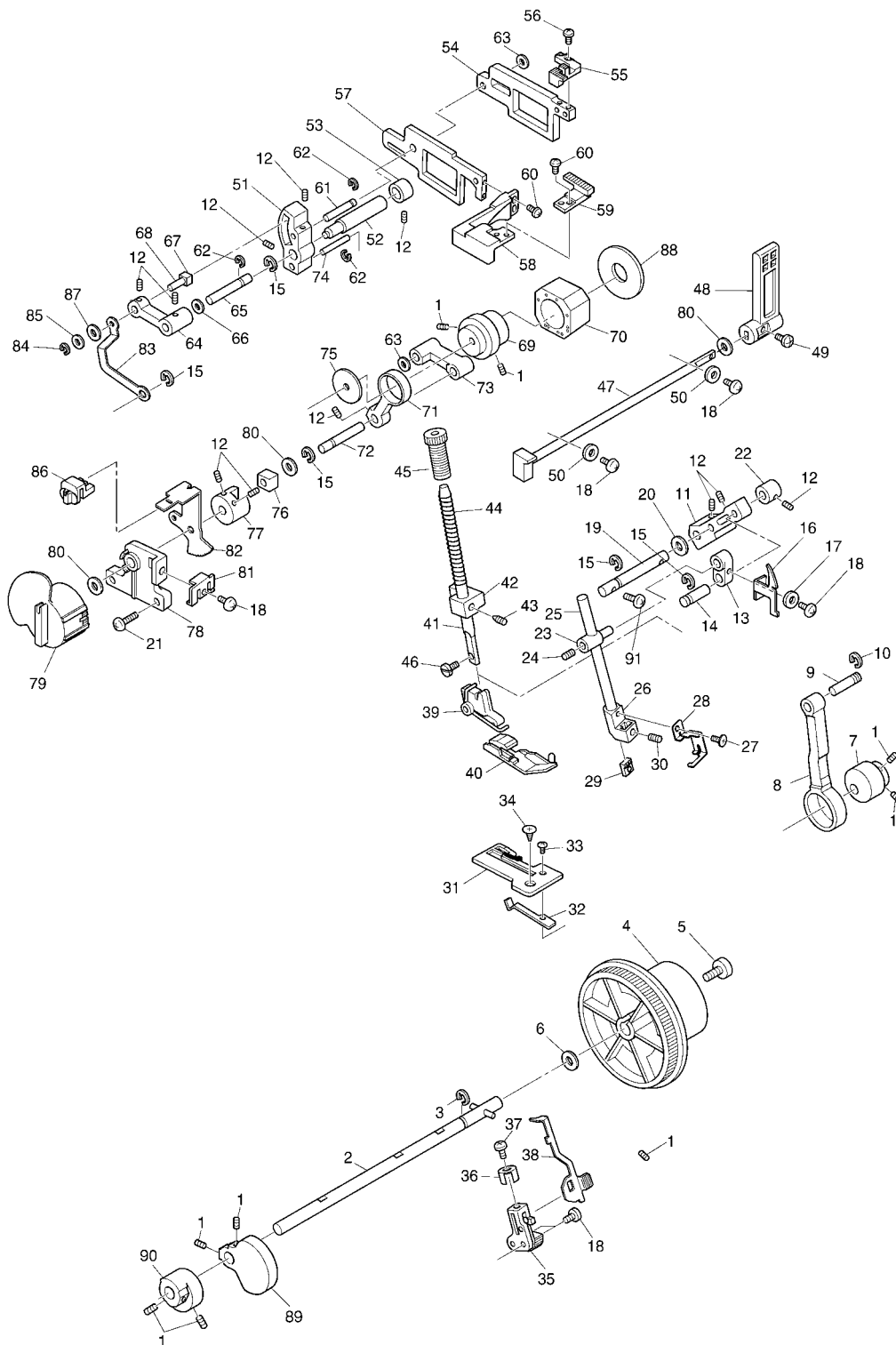
[illegible]



(2) NEEDLE BAR, FEED BAR AND PRESSER HOLDER

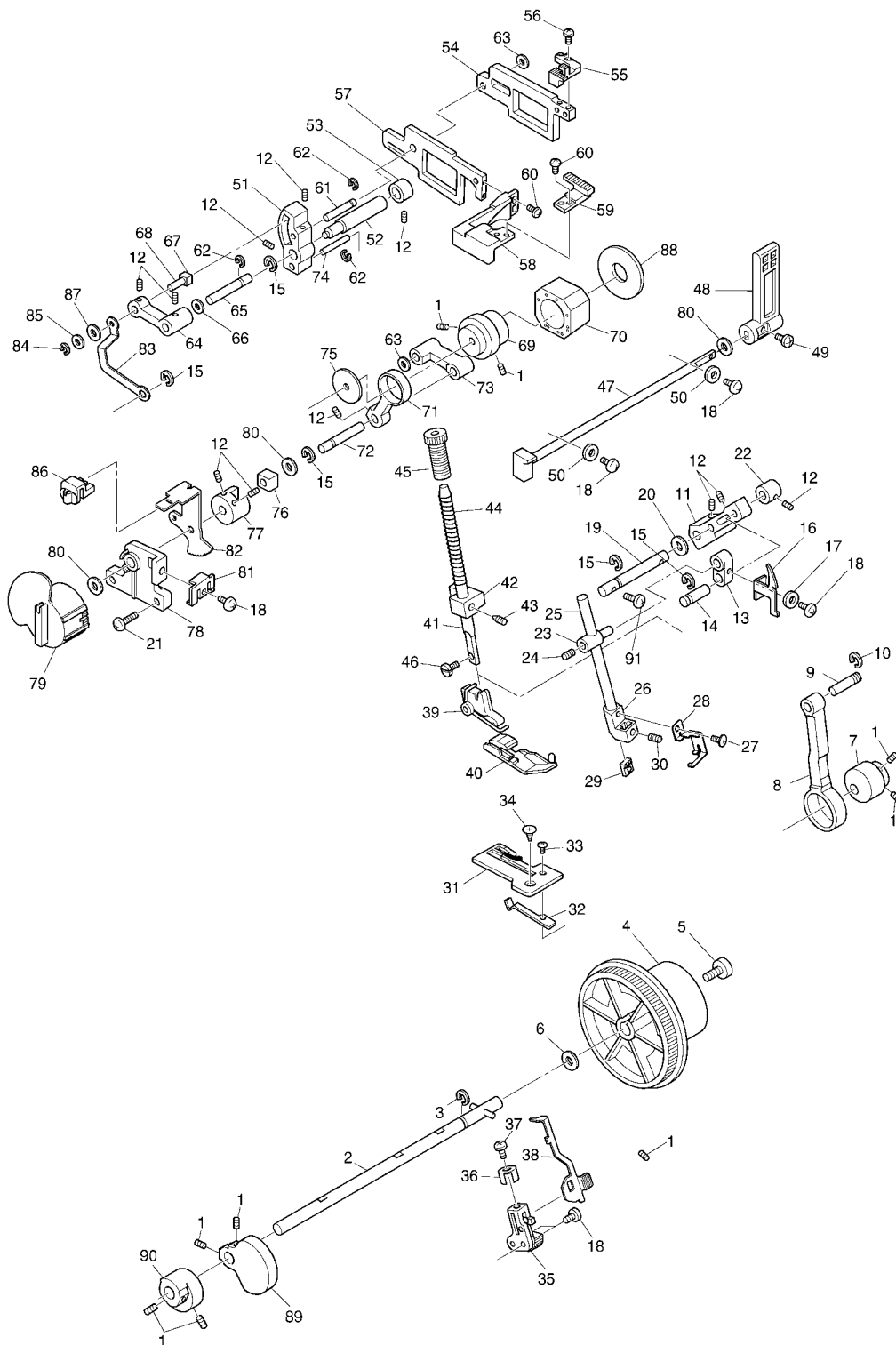
No.	PARTS No.	PARTS NAME
1	012500632	Set screw
2	XB0868001	Driving shaft assembly
3	048080142	Stop ring
4	X77603002	Timing pulley
5	X77750001	Set screw
6	X77604000	Washer
7	XB0875000	Needle bar eccentric wheel
8	138839000	Needle bar rod
9	138875001	Rod shaft
10	048060342	Stop ring
11	X77611000	Needle bar driving lever
12	014400422	Set screw
13	XB1276000	NEEDLE BAR CONNECTING LINK CHG
14	XB0806001	Needle bar rod shaft A
15	048050346	Stop ring
16	X77612001	Thread take-up
17	028040242	Spring washer
18	060400606	Set screw
19	XB0560000	Needle bar shaft
20	100197004	Washer
21	060401206	Set screw
22	X05286001	Collar
23	126656001	Needle bar connecting stud
24	014060632	Set screw
25	XB0672001	Needle bar
26	XB1106001	NEEDLE CLAMP CHG
27	X76215001	Set screw
28	XB1093001	NEEDLE BAR THREAD GUIDE CHG
29	XB0304001	Needle presser
30	016400632	Set screw
31	XB0306001	Needle plate
32	X77618001	Fixed needle guard
33	004020506	Set screw
34	100032003	Set screw
35	XB0401001	Stitch holder assembly
36	X77092001	Stitch plate spring
37	062300406	Set screw
38	XB0309001	Stitch tongue
39	XB0311001	Presser holder assembly
40	XB0316001	Presser foot assembly
41	126660001	Presser bar
42	127198000	Presser bar guide bracket
43	100058003	Set screw
44	X77621001	Presser bar spring

No.	PARTS No.	PARTS NAME
45	142860001	Presser adjusting screw
46	126851001	Set screw
47	XB0876001	Presser lifter shaft assembly
48	XB0878001	Presser foot lever
49	060300616	Set screw
50	025040332	Washer
51	X77628000	Feed bar lever
52	XB0320000	Feed bar lever shaft
53	X75150001	Collar
54	XB0321000	Main feed bar
55	XB0322001	Main feed dog
56	062300604	Set screw
57	XB0323000	Differential feed bar
58	XB0325000	Differential feed base
59	X77763001	Differential feed dog
60	060300806	Set screw
61	127784001	Overlooper shaft guide shaft
62	048040342	Stop ring
63	025050132	Washer
64	X77650000	Differential adjusting link
65	X76792001	Horizontal lever shaft
66	026060132	Washer
67	X77653000	Differential feed adjusting block
68	X77652000	Differential adjusting link shaft
69	X77634000	Feed eccentric wheel
70	X77736000	Vertical feed block
71	X77635000	Feed link
72	XB0526001	Feed link shaft
73	XB0472000	Feed bar link
74	XB0474001	Link shaft
75	XB0595001	Feed link guide
76	X77639000	Feed adjusting block
77	XB0559000	Feed adjusting lever
78	XB0328000	Feed base
79	XB0879001	Feed dial
80	X76687000	Wave washer
81	X77646001	Dial plate spring
82	XB0332001	Differential adjusting lever assembly
83	XB0334000	Differential adjusting link
84	048030342	Stop ring
85	025040232	Washer
86	XB0335002	Differential control lever
87	X76879000	Wave washer
88	XB0565001	Washer



(2) NEEDLE BAR, FEED BAR AND PRESSER HOLDER

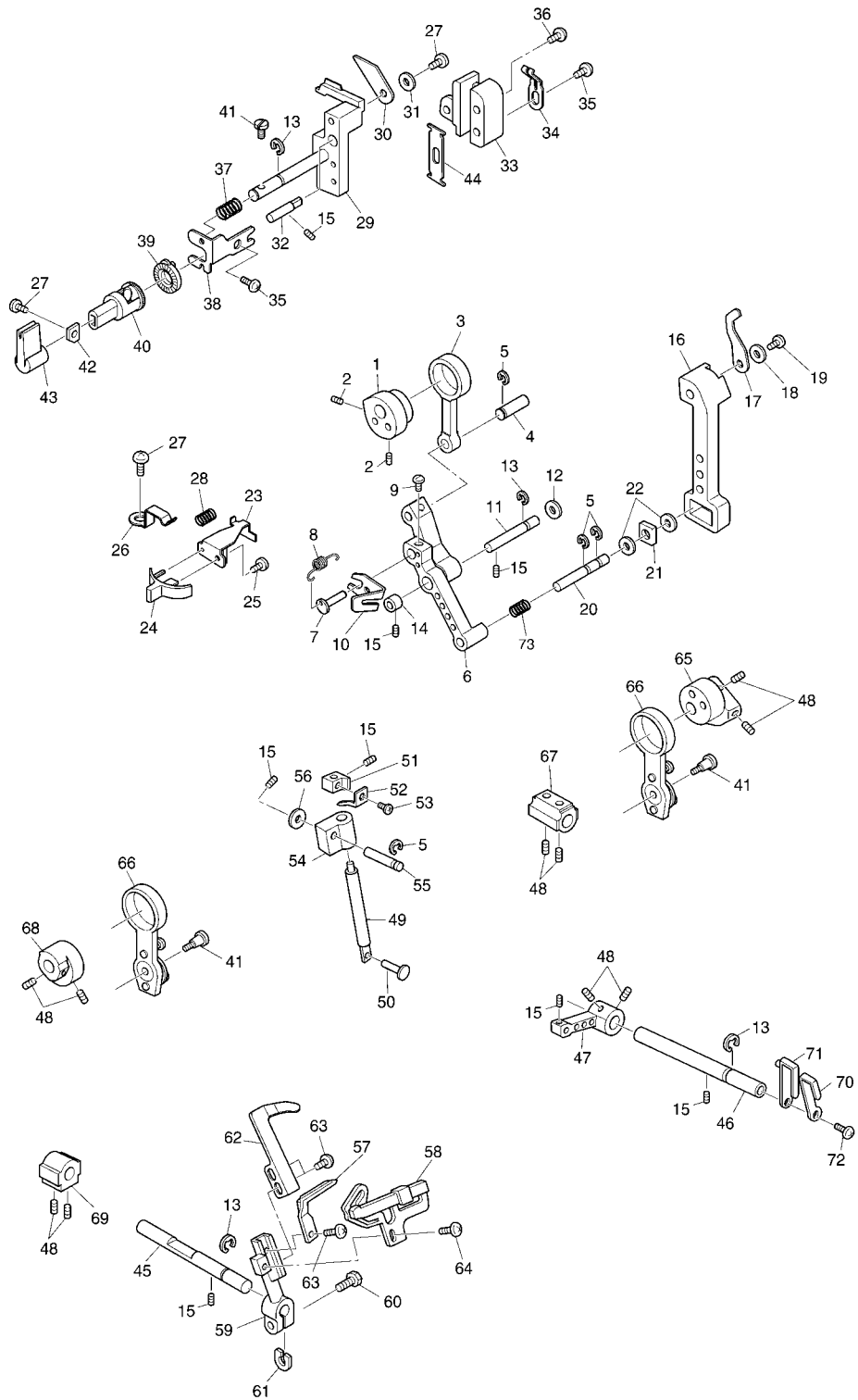
[illegible]



(3) KNIFE AND LOOPER

No.	PARTS No.	PARTS NAME
1	XB0337050	Upper knife eccentric wheel
2	012500632	Set screw
3	XB0338050	Upper knife link
4	XB0340051	Upper knife link shaft
5	048040342	Stop ring
6	XB0561051	Upper knife arm assembly
7	XB0346050	Connect pin
8	XB0347051	Connect pin spring
9	060300406	Set screw
10	XB0348051	Cancel plate
11	XB0343001	Upper knife fulcrum shaft
12	025080132	Washer
13	048060342	Stop ring
14	X75150001	Collar
15	014400422	Set screw
16	XB0356050	Upper knife holder
17	XB0563001	Upper blade
18	025040232	Washer
19	060400806	Set screw
20	XB0350051	Upper knife arm shaft
21	XB0351050	Upper blade block
22	026060132	Washer
23	XB0361051	Lever plate assembly
24	XB0364052	Blade lever
25	037300815	Set screw
26	XB0365051	Lever plate spring
27	060400606	Set screw
28	XB0573001	Lever spring
29	XB0368051	Lower blade holder
30	X77683001	Lower blade
31	025040232	Washer
32	X76737001	Lower blade guide shaft
33	XB0355050	Upper knife holder guide
34	XB0564051	Upper blade holder plate spring
35	060400416	Set screw
36	060401606	Set screw
37	XB0369051	Lower blade spring
38	XB0358051	Dial plate
39	XB0554051	Blade control dial plate
40	XB0357052	Blade control dial assembly
41	X75317001	Looper rod stud shaft
42	127254001	Plate nut
43	XB0528002	Stitch width lever
44	XB0571001	Upper knife presser plate

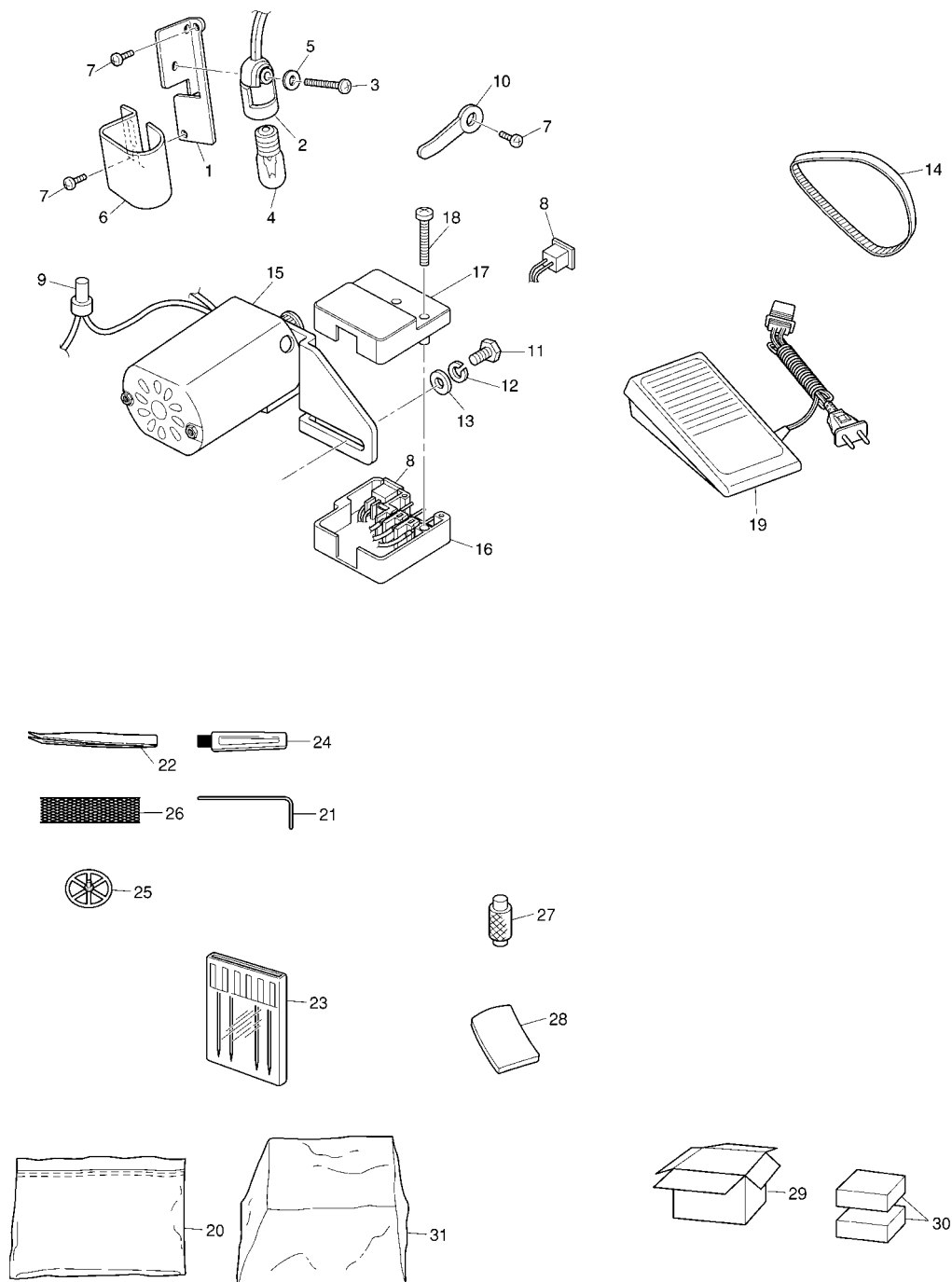
[illegible]



(4) LAMP, MOTOR AND ACCESSORY

No.	PARTS No.	PARTS NAME
1	X77710000	Lamp plate
2	XB0737001	Lamp assembly 120V
	XB0741001	Lamp assembly (AUSTRALIA, NZ)
	XB0998001	Lamp assembly 230V (EC)
3	062302006	Set screw 120V
	062300406	Set screw 220-240V
4	X53061050	Lamp 120V
	205336050	Lamp 220-240V
5	025350332	Washer (120V only)
6	X77423000	Lamp cover plate
7	060400606	Set screw
8	XB0901001	Switch assembly (120V)
	XB0905001	Switch assembly (220-240V)
9	X77076001	Connector
10	XA0286051	Clip
11	103741001	Set screw
12	203735001	Spring washer
13	100197004	Washer
14	X77826001	Timing belt
15	XB0908001	Motor (230V EC)
	XB0913001	Motor (120V U.S.A., CANADA)
	XB0918001	Motor (240V AUSTRALIA, NZ)
	XB0920001	Motor (220V)
16	XB0910001	3pin socket body
17	XB0911001	3pin socket cover
18	037401815	Set screw
19	J01780051	Foot controller (U.S.A., CANADA)
	XA6406051	Foot controller (EC)
	XA6408051	Foot controller (U.K)
	XA6410051	Foot controller (AUSTRALIA, NZ)
	XA6420051	Foot controller (GERMANY)
20	122991002	Accessory bag
21	X77128001	Hexagonal (allen) wrench
22	X75902001	Tweezers
23	X75917001	Needle set (#80/#90)
	X75580001	Needle set (#70/#80)
24	X75906001	Cleaning brush
25	X77260000	Thread spool cap
26	X75904000	Net
27	XB0133001	Thread (yellow)
	XB0133002	Thread (red)
	XB0133003	Thread (green)
	XB0133004	Thread (blue)

[illegible]



1034D
H0080182